




The potential for colonization of Mars

Group1

1108209036朴善熙
1108200159劉沛涵
1108224021蔡昀恩
1108203095何宜融

- 
- ① Motivation
 - ② Pros
 - ③ Cons
 - ④ Solution
 - ⑤ Conclusion

CONTENTS

Motivation:

Over-developed

Global warming

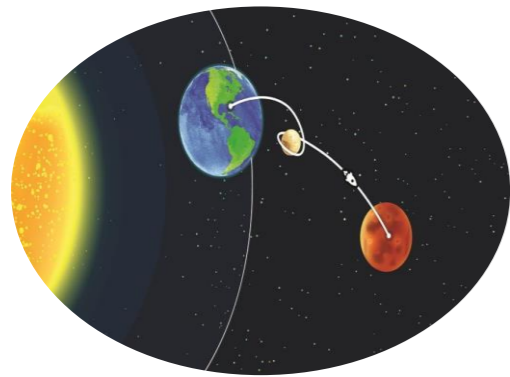
Running out the resources

**MOVING
TO MARS**

the
DESIGN
MUSEUM



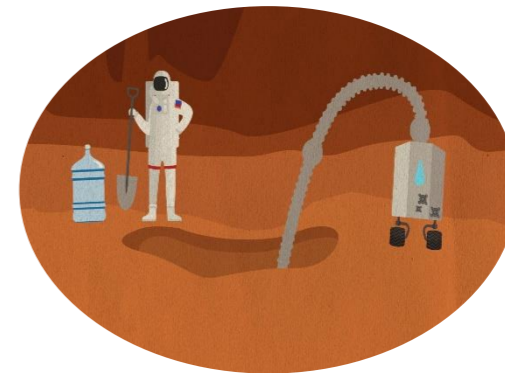
Pros:



Distance

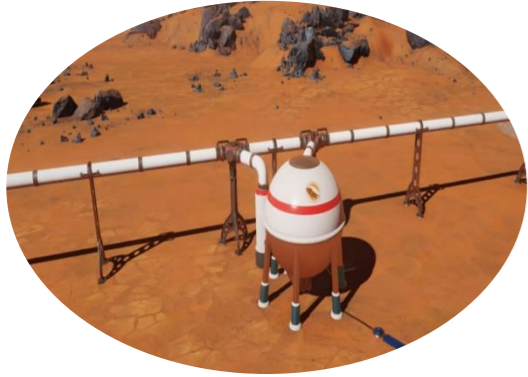


Time

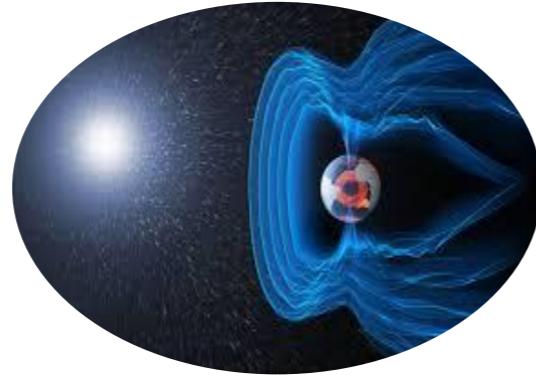


Rich of resource

Cons:



Constraint of fuel

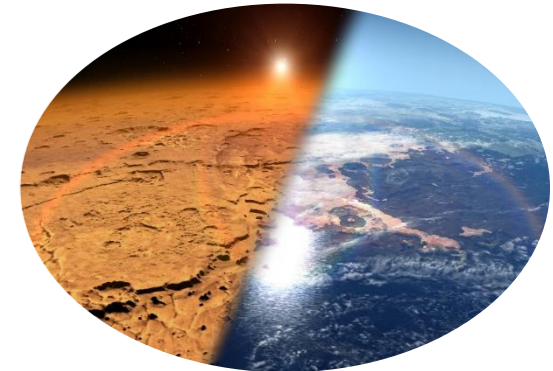


Radiation

- health problems



Alien creature



Environment

Solution:

Solid-state analogue to Earth's atmospheric greenhouse effect.

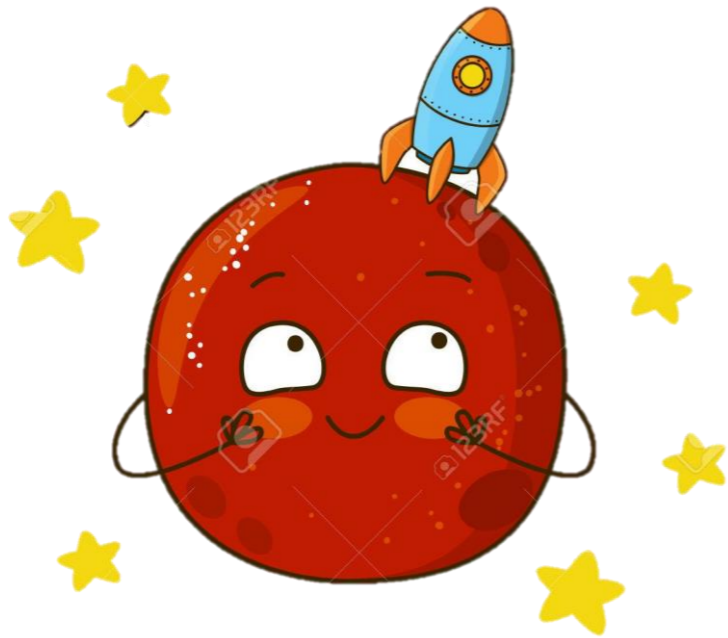
Silica aerogel

- Transmit sufficient visible light for photosynthesis
- Block hazardous ultraviolet radiation
- Raise temperatures underneath it permanently to above the melting point of water



Conclusion:

Moving to the Mars is not an easy task, we need to protect our earth and not to get worsen.





THANK YOU!!